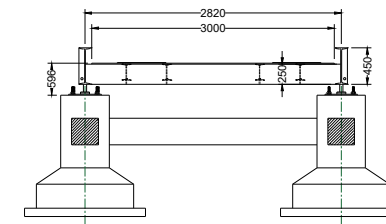
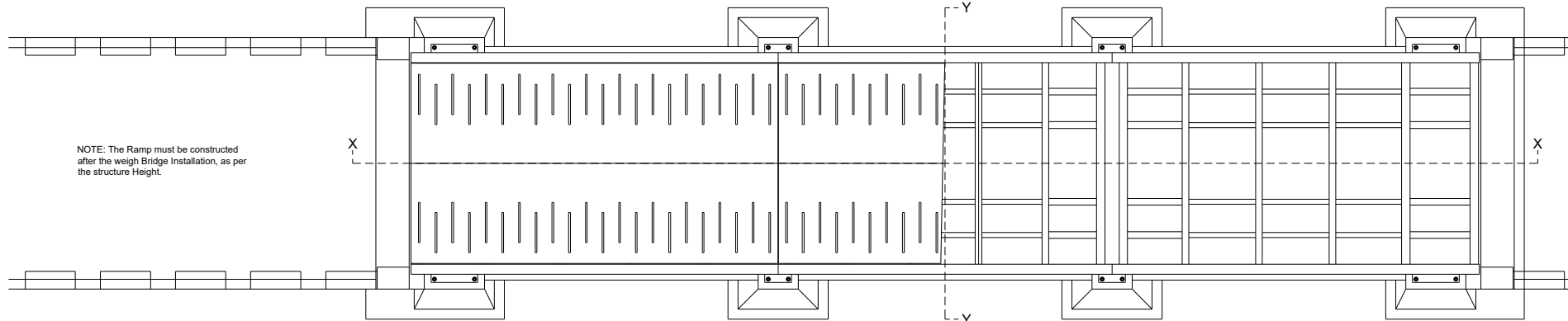


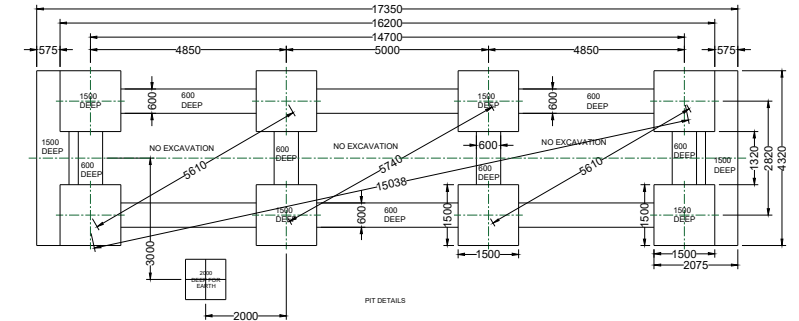
SECTION X-X



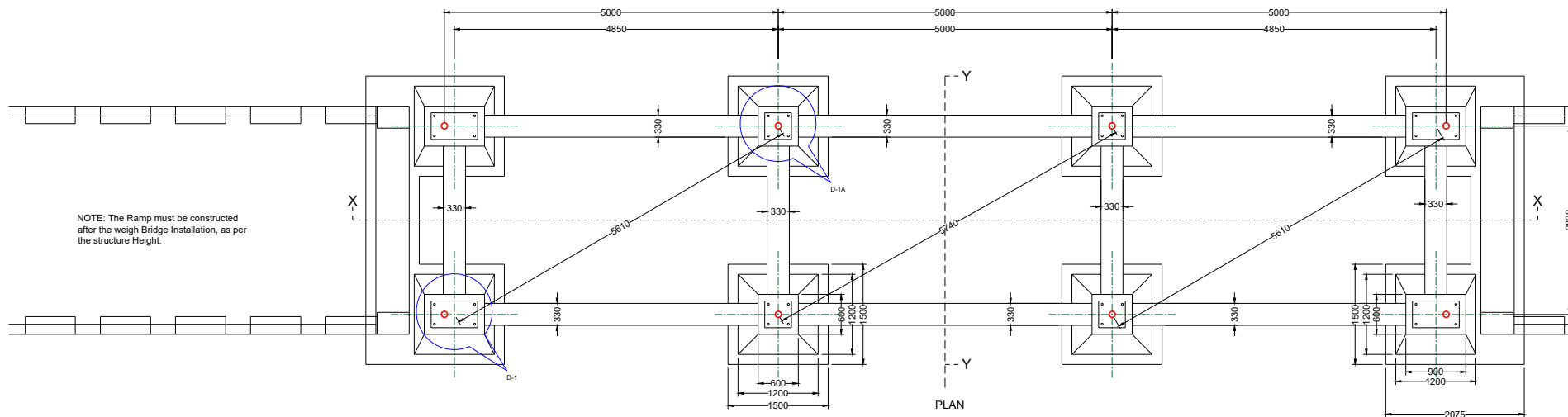
SECTION Y-Y



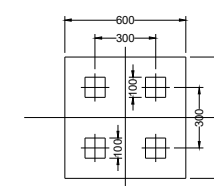
PLAN



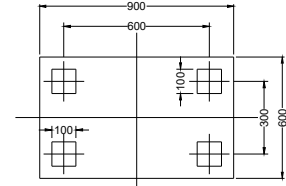
PIT DETAILS



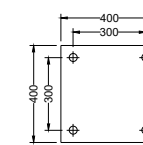
PLAN



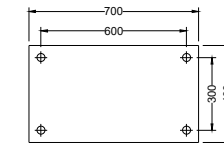
DETAIL (D - 1A)



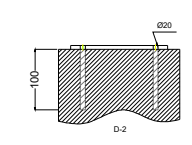
DETAIL (D - 1)



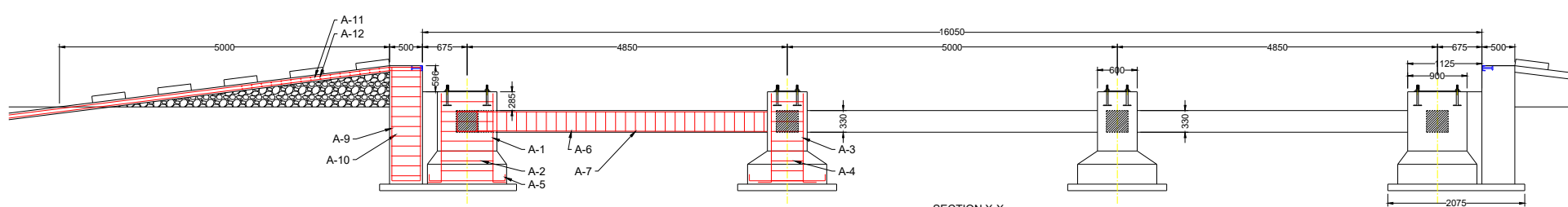
D-1A (FON PLATE)



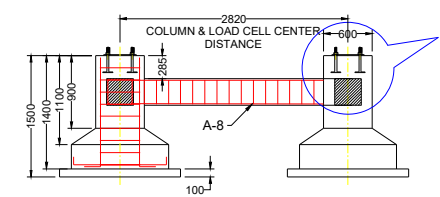
D-1 (FON PLATE)



D-2



SECTION X-X



SECTION Y-Y

(A) LOAD CELL COLUMNS

SR. NO.	MARK	TYPE	NOS.	DIA	a	b	c	d	e	f	o deg.	LENGTH MTR.	TOTAL LENGTH MTR.	UNIT WT. kg.	TOTAL WT. kg.
1	A-1	4	36	8	0.800	0.500	0.800	0.500	0.000	0.000	0.000	2.600	93.600	0.39	36.504
2	A-2	2	40	12	1.500	0.200	0.000	0.000	0.000	0.000	0.000	1.700	68.000	0.89	60.520
3	A-3	4	36	8	0.500	0.500	0.500	0.000	0.000	0.000	0.000	2.000	72.000	0.39	28.080
4	A-4	2	32	12	1.500	0.200	0.000	0.000	0.000	0.000	0.000	1.700	54.400	0.89	48.416
5	A-5	3	128	12	0.100	1.150	0.100	0.000	0.000	0.000	0.000	1.350	172.800	0.89	153.792

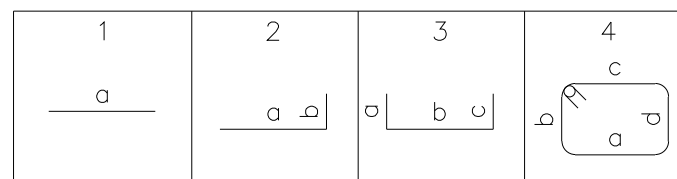
(B) TIE BEAMS

6	A-6	1	8	12	14.500	0.000	0.000	0.000	0.000	0.000	0.000	14.500	116.000	0.89	103.240
7	A-7	4	290	8	0.300	0.300	0.300	0.300	0.000	0.000	0.000	1.200	348.000	0.39	135.720
8	A-8	1	16	12	3.600	0.000	0.000	0.000	0.000	0.000	0.000	3.600	57.600	0.89	51.264

(C) REINP

7	A-9	3	25	12	1.750	0.400	1.750	0.000	0.000	0.000	0.000	3.900	97.500	0.89	86.775
8	A-10	4	12	8	3.700	0.400	3.700	0.400	0.000	0.000	0.000	8.200	98.400	0.39	38.376
9	A-11	1	50	12	5.600	0.000	0.000	0.000	0.000	0.000	0.000	5.600	280.000	0.89	245.200
10	A-12	4	37	8	3.700	0.050	3.700	0.050	0.000	0.000	0.000	7.500	277.500	0.39	108.225
													TOTAL WEIGHT		1100.112

STEEL DETAIL



TYPE

A. REFERENCE STANDARDS :-			
1. CONCRETE AND ITS CONSTRUCTION	IS : 546		
2. CEMENT	IS : 269		
3. AGGREGATES	IS : 383		
4. REINFORCEMENT BARS	IS : 1786		
5. ASSEMBLY OF REINFORCEMENT BARS	IS : 2502		
6. SKIRTING ANGLES	IS : 808		
7. CONDUIT PIPES	IS : 1161		
B. NOTES :-			
8. ALL DIMENSIONS ARE IN mm. AND LEVELS ARE METERS.			
9. EL. 0.000 DENOTES FINISHED ROAD LEVEL/G.L. (REFERENCE LEVEL).			
10. SOIL BEARING CAPACITY OF 10 TONS/SQ.M ASSUMED AT FOUNDATION LEVEL.			
11. GROUND WATER TABLE IS ASSUMED TO BE BELOW FOUNDATION LEVEL.			
12. ADEQUATE RUBBLE SOLING TO BE DONE BELOW P.C.C. SKIRTINGS AS REQUIRED.			
13. MINIMUM CONCRETE COVER TO MAIN REINFORCEMENT TO BE AS			
FOLLOWG/RAFTS - 25MM, WALLS - 25MM, COLUMNS - 40MM.			
14. ADEQUATE CONCRETE TEST CUBES TO BE TAKEN AND TESTED FOR STRENGTH.			
15. REINFORCEMENT BARS NOT TO BE WELDED TO EACH OTHER FOR RETAINING PURPOSES, BUT TO BE TIED TOGETHER ONLY. LAP LENGTH = 500 (D = DIA OF BAR TO BE LAPPED.)			
16. NON SHRINKING GROUTING MATERIAL (SUCH AS SHRINCOM - H FROM ACC) TO BE USED FOR GROUTING.			
17. SOIL IS CONSIDERED AS NORMAL.			
18. THE REINFORCEMENT BARS SHALL NOT COME ON THE POCKET LOCATION.			
PROJECT :- PIT LESS FOUNDATION DIMENSIONAL DETAILS		COMPUTER FILENAME :- STPL/16030/BLC	
CLIENT :-		APPROVED	
TOLERANCES :-		CHECKED	
CH: LINEAR	NOES	DRAWN	
U/C: SF:			
MATERIAL :- R.C.C - M30 P.C.C - M15 REINFORCEMENT BARS - HYSD Fe 415		SCALE 1:100	
UNITS mm		16030/BLC	
W. kg		ROAD WEIGHBRIDGE	
DWG		G. A. DRAWING	
FEPL 16030 040420 01		STPL/16030/BLC	
SHEET NO. 1 OF 1			